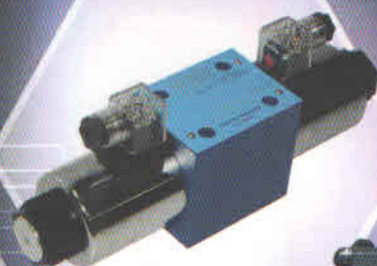


V-TEK

TOTAL SOLUTION FOR HYDRAULICS



WORLD
-EUROPE
-AMERICA
-ASIA
-AFRICA



**Tandem
Hydraulics
Pvt. Ltd.**

www.tandemhydraulics.com
www.vtekhydraulics.com



AN ISO 9001:2008 CERTIFIED CO.

Hydraulic Control Valves
Hydraulic Power Packs
Orbital Motors
Hydraulic Steering Units
Variable Vane Pumps
Lift Blocks
Gear Pumps

1201011010101001
001010101010101
1101010110010101
1101010020010101
11111010101010101
10110101010101
111110001010111101010
1011010101
101011110101010101
011001010101
11111010101010101
011010101010101

1201011010101001
1101010101010101
11111010101010101
111111010101010101
10101010101010101
111111010101010101

Introduction

V-TEK is a global brand of Hydraulic Products which are manufactured in world class facilities under strict quality control processes. These Hydraulic Products are marketed in India by Tandem Hydraulics Pvt. Ltd., an ISO 9001:2008 certified company established in 1999. Our Hydraulic Products include Hydraulic Control Valves, Hydraulic Power Packs, Orbital Motors, Hydraulic Steering Units, Solenoid Operated Direction Control Valves, Gear Pumps, Variable Vane Pumps & Lift Blocks besides a wide range of Hydraulic accessories.

Manual Directional Control Valves

They are designed to perform with high efficiency under all conditions.

The outstanding features are as follows :

- European design
- Monoblock & Sectional
- Available in 1-6 working sections
- High volumetric efficiency
- Max pressure 315 bar
- Different spool configurations available
- Flow ranging from 40 LPM to 160 LPM
- Available in 3/8", 1/2" & 3/4" port connections
- Joystick options also available
- Available in Manual, Pneumatic, Hydraulic and Electric Control.



Technical Specifications

Type	VT-40	P-40	P-80
Number of working Sec.	1	1-6	1-6
Rated Flow	40 l/min	45 l/min	80 l/min
Rated Pressure			
● In outlets P, A, B and N	250 bar	250 bar	250 bar
● In outlet T	100 bar	100 bar	100 bar
● Control pressure range	50-250 bar	50-250 bar	50-250 bar
Degree of filtration	25 μ m	25 μ m	25 μ m
Temperature range	-20 to + 80°C	-20 to + 80°C	-20 to +80°C

Hydraulic Power Packs

We design, manufacture & supply Hydraulic Power Packs operable with working pressures upto 200 bar. Special pressure setting can be customized as per user requirement.

DC Hydraulic Power Pack

These are developed using high-end technology comparable to international standards with a wide spectrum of application usages such as Cement Trucks, Mobile Hoists, Cranes, Wheelchair & Personal Lifts, Electric Forklifts, Portable Presses and Hydraulic Systems of various types.

Specifications

Motor Options :

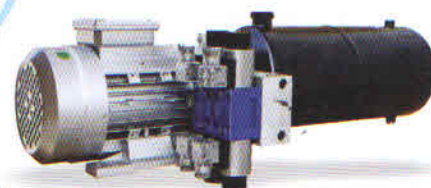
Voltage : 12 V, 24 V & 48V DC

Power Rating : 0.5 Kw to 3.0 Kw

Pump Options : 0.5 cc/rev to 7.3 cc/rev

Applications

- Pallet Lifters
- Pallet Trucks
- Hydraulic Hoppers
- Car Carrying Trucks
- Compact Hydraulic Machines
- Battery Operated Trolleys
- Platforms
- Goods Lifts & Two Post Lifts
- Broadcasting Vans
- E-Rickshaw



Mini AC Hydraulic Power Pack

Our versatile, user-friendly AC Hydraulic Power Packs find applications in a host of equipments such as Parking Systems, Security Gates, Car Hoists, Compactors, Aerial Platforms, Dock Levelers, Factory Automation & Scissor Lifts ensuring optimal efficiency, cost savings and multiple control options and configurations.

Specifications

- AC Motor from 0.25 HP to 5.0 HP
- Pump capacity from 0.5 cc/rev to 7.3 cc / rev
- Standard Tank sizes vary from 0.5 Ltr to 10 Ltrs
- Hydraulic circuit valves can be inter-changed with the standard manifold.



Orbital Motors

These motors with shell made of ductile cast iron of adequate intensity, can be applied to situations with less load and interval operation. They are widely used in agriculture, forestry, plastics, machine tools and mining machines, such as the mould height adjustment of injection moulding machine, cleaner, saw, worktable etc.



OMP Series

TYPE		OMP-50	OMP-80	OMP-100	OMP-125	OMP-160	OMP-200	OMP-250	OMP-315	OMP-400
Displacement (cc/rev)		52.9	79.3	98.2	120.9	158.7	196.4	241.8	317.3	392.9
Pressure (bar)	cont.	140	140	140	140	140	140	110	90	70
	int.	175	175	175	175	175	175	140	110	90
Max. Torque (N.m)	cont.	89	150	191	235	307	365	378	378	378
Speed Range (cont.) (r/min)		10-800	10-770	9-615	9-480	8-385	7-310	5-250	5-195	5-155
Max. Output Power (cont.)(Kw)		7	7	10	10	10	10	8	6	5

OMR Series

TYPE		OMR-50	OMR-80	OMR-100	OMR-125	OMR-160	OMR-200	OMR-250	OMR-315	OMR-400
Displacement (cc/rev)		51.7	80.5	100.5	126.3	160.8	200.9	252.6	321.5	401.9
Pressure (bar)	cont.	140	140	140	140	140	140	110	90	70
	int.	175	175	175	175	175	175	140	110	90
Max. Torque (N.m)	cont.	93	152	194	237	310	369	380	380	380
Speed Range (cont.) (r/min)		10-775	10-750	10-600	9-475	7-375	5-300	5-240	5-190	5-160
Max. Output Power (cont.) (Kw)		7	7	10	10	10	10	8	6	5

OMS Series

TYPE		OMS-80	OMS-100	OMS-125	OMS-160	OMS-200	OMS-250	OMS-315	OMS-400
Displacement (cc/rev)		80.5	100.5	126.3	160.8	200.9	252.6	321.5	401.9
Pressure (bar)	cont.	175	175	175	160	160	125	125	100
	int.	200	200	200	200	200	160	160	140
Max. Torque (N.m)	cont.	194	242	303	358	438	440	551	560
Speed Range (cont.) (r/min)		10-810	10-750	9-600	7-470	6-375	6-300	5-240	5-180
Max. Output Power (cont.)(Kw)		14	16	16	14	14	11	10	8

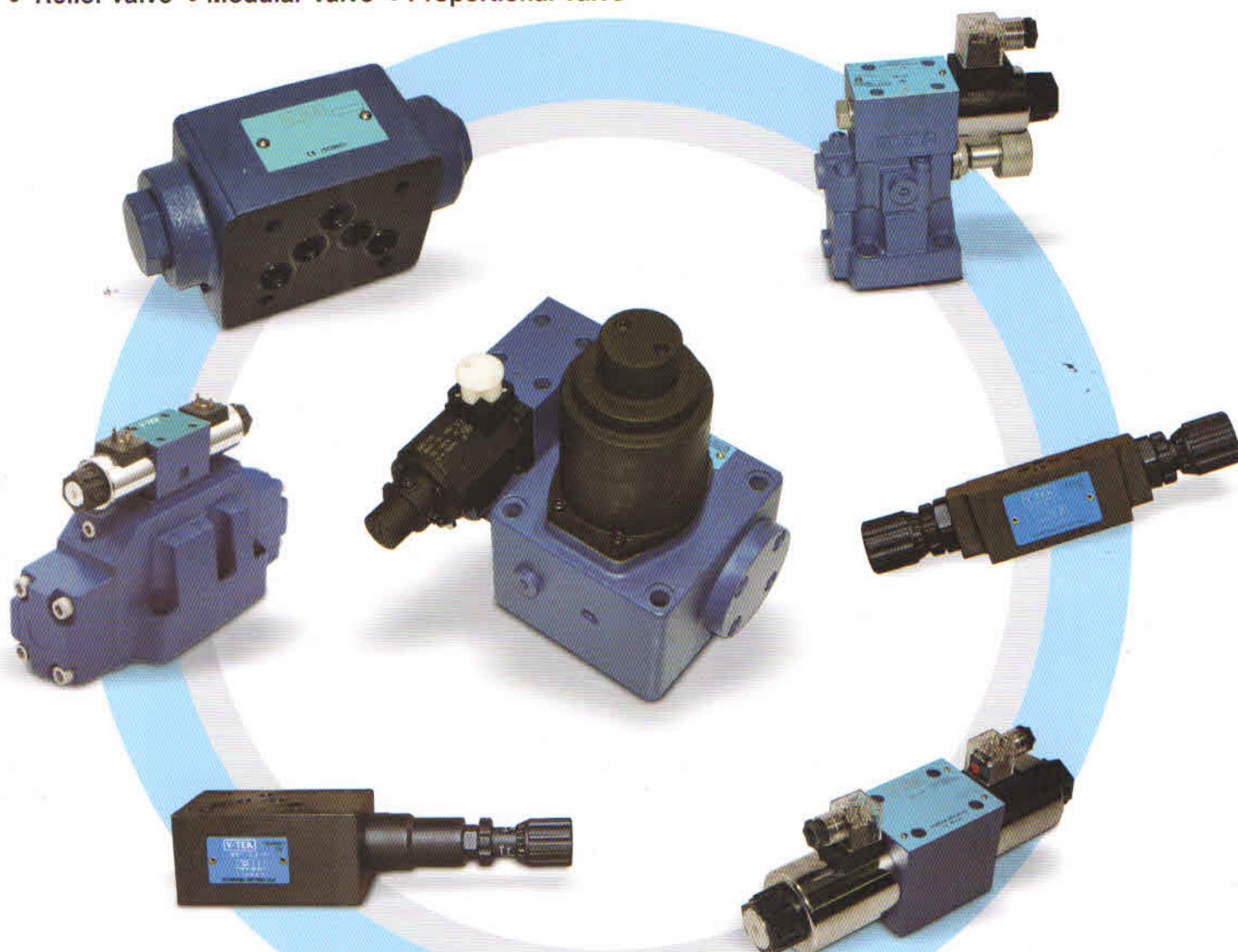
OMT Series

TYPE		OMT-160	OMT-200	OMT-250	OMT-320	OMT-400	OMT-500
Displacement (cc/rev)		158.8	200.8	252.2	317.5	401.6	535.3
Pressure (bar)	cont.	200	200	200	200	180	160
	int.	240	240	240	240	210	180
Max. Torque (N.m)	cont.	450	561	710	902	1008	1121
Speed Range (cont.)(r/min)		10-625	9-625	8-500	7-380	6-305	5-240
Max. Output Power (cont.)(Kw)		20.1	25.2	25.2	25.2	22	31

Hydraulic Control Valves

V-TEK valves are known for their extraordinary quality and robust performance across Industrial and Mobile Applications. The performance curves of these valves are comparable to the best in industry and are available at very economical rates. The salient features of these Valves are as follows :

- Very robust construction.
 - Available across 12V, 24V, 110V and 230V.
 - Complete flexibility of interchangeability of coils. No need to change core.
 - Designed to meet appropriate CETOP, DIN and ISO Standards.
 - With strong magnet and spring force, the valves are tough against contamination and thus ensure a stable operation.
 - Rated for Operating Pressure of upto 315 Bar.
- **Solenoid Operated Directional Control valve** • **Electro Hydraulic Directional Control valve**
 • **Relief Valve** • **Modular Valve** • **Proportional Valve**



Hydraulic Steering Control Unit

The unit consists of a rotary valve and a rotary meter. The steering unit is connected to steering wheel via a steering column. On turning of steering wheel, oil is directed from steering system pump via rotary valve and rotary meter to cylinder ports. This is used in steering low speed and heavy duty vehicles such as engineering machinery, forklift, tractor, combine harvester etc.



Variable Displacement Vane Pump

The V-TEK brand of variable displacement vane pumps are widely used in machine tools for clamping, slide movement etc.



Characteristics

- Double stage & Single stage available.
- Very low operating noise.
- High efficiency operation with minimum power loss.
- Simple and compact design, space saving and easy operation.
- Sturdy structure for long service life.

Technical Specifications

- Displacement - 4.4 to 22.22 cc/rev
- Max. Pressure - 70 Bar
- Min. RPM - 800
- Max. RPM - 1800



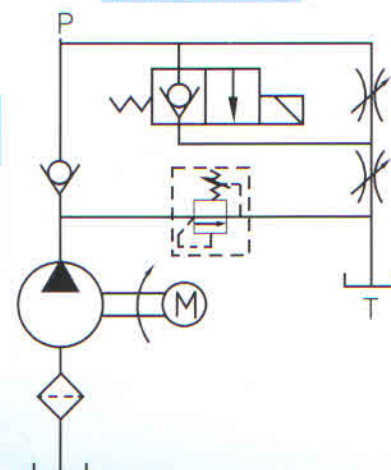
LIFT BLOCK

V-TEK range of Lift Blocks are a compact hydraulic solution to control single acting cylinders that are generally mounted on stackers and scissor lifts. They offer a complete solution for lifting, controlled lowering and safety of the pump, cylinder and personnel. When the pump is switched ON the cylinder is extended. The check valve holds the load in place when the pump is switched OFF. For lowering the load solenoid valve is energized which connects the oil to the tank. The rate of lowering can be controlled by the flow control valve. In case of power failure the load can be lowered by the emergency lowering valve which can be operated manually.

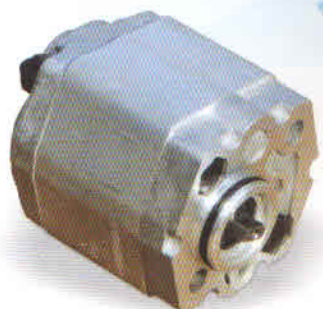


Technical Specifications

Model	Type	Max flow litres/min	Rated flow litres/min	Max pressure	Temperature	Terminations
LBV-30	Normally Open-NO/ Normally Closed-NC	30	25	250 Bar	-20°C-120°C	Plug-type
LBV-50	Normally Open-NO/ Normally Closed-NC	60	50	250 Bar	-20°C-120°C	Plug-type



Hydraulic Gear Pumps



Model	Displacement (cc)	Rated Pressure (Bar)	Max Speed (RPM)
CBK-F0.63	0.63	200	3000
CBK-F0.75	0.75	200	3000
CBK-F1.1	1.1	200	3000
CBK-F1.3	1.3	200	3000
CBK-F1.6	1.6	200	3000
CBK-F2.1	2.1	200	3000
CBK-F2.6	2.6	200	3000
CBK-F3.2	3.2	200	3000
CBK-F3.8	3.8	200	3000
CBK-F4.2	4.2	200	3000
CBK-F 4.8	4.8	200	3000
CBK-F5.8	5.8	200	3000

Model	LPM@1440 RPM	Rated Pressure (Bar)	Max Speed (RPM)
"VP- 0 Series " Pump Group			
	VP-0 Series		
VP-03	1.200	200	3000
VP-04	1.800	200	3000
VP-06	2.500	200	3000
VP-08	3.400	200	3000
VP-11	4.800	200	3000
VP-13	5.800	200	3000
VP-15	6.800	200	3000
"VP- 1 Series " Pump Group			
	VP-1 Series		
VP-17	7.700	200	3000
VP-20	9.100	200	3000
VP-28	12.700	200	3000
VP-36	16.400	200	3000
VP-44	20.000	200	3000
VP-52	23.600	200	3000
VP-60	27.300	200	3000
VP-72	32.700	150	3000
VP-90	40.100	150	3000
"VP- 2 Series " Pump Group			
	VP-2 Series		
VP-050	22.700	200	3000
VP-070	32.000	200	3000
VP-090	41.000	200	3000
VP-105	47.700	200	3000
VP-120	54.500	200	3000
VP-146	66.500	200	3000
VP-158	71.800	200	3000
VP-220	100.00	175	3000





Tandem Hydraulics Pvt. Ltd.

Mobile: + 91 - 9810313876, 9810132233, 8700276049

Email: info@tandemhydraulics.com, sales@tandemhydraulics.com

Website : www.tandemhydraulics.com, www.vtekhydraulics.com

Telephone: + 91-120-4159611

Plot No. 17, Street No 4, Punjab Expeller Compound,
Meerut Road, Ghaziabad - 201001, UP, India



AN ISO 9001 - 2008 CERTIFIED CO.